

State of Wyoming Corner Record

(In compliance with the **CORNER PERPETUATION AND FILING ACT**, Wyoming Statutes, 1997 Section 33-29-140 et. seq., and the Rules and Regulations of the Board of Professional Engineers and Professional Land Surveyors)

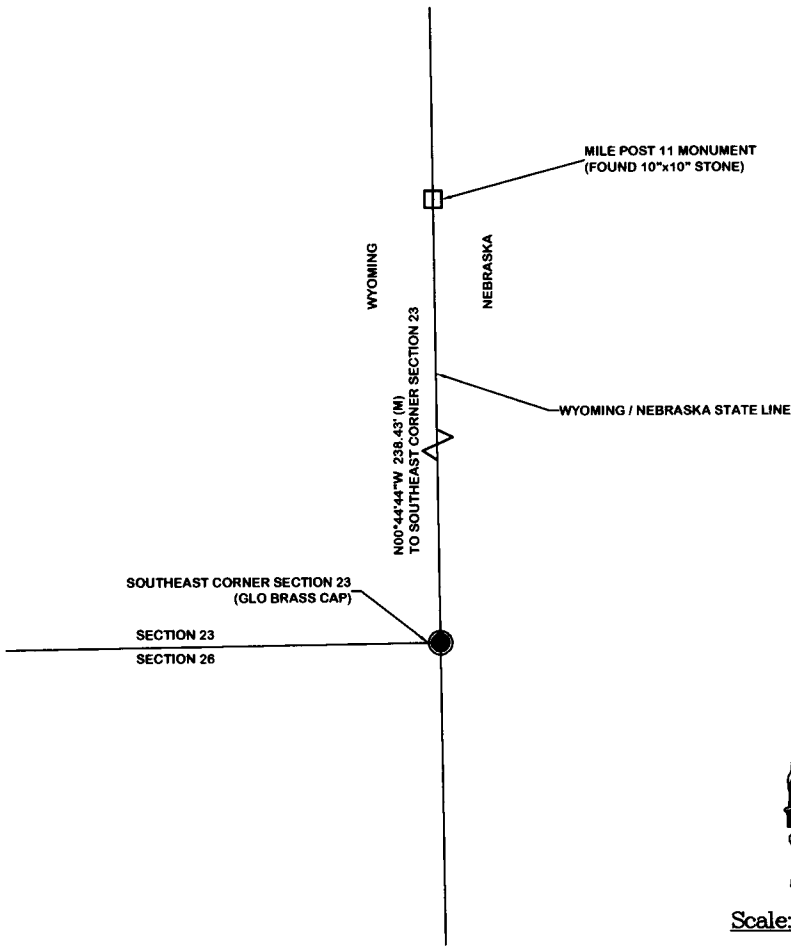
Reverse side of this form may be used if more space is needed.

Record of original survey and citation of source of historical information (if corner is lost or obliterated). Description of corner monumentation evidence found and/or monument and accessories established to perpetuate the location of this corner. Sketch of relative location of monument, accessories, and reference points with course and distance to adjacent corner(s) (if determined in this survey). Method and rationale for reestablishment of lost or obliterated corner.

FOUND: 10"x10" Stone Protruding 3 feet from ground in accordance with GLO notes, Mile Post 11 monument, WY Section 23, along the Wyoming / Nebraska state line.

SET: Nothing

RECORDED 12/27/2011 AT 3:51 PM REC# 582108 BK# 2252 PG# 361
DEBRA K. LATHROP, CLERK OF LARAMIE COUNTY, WY PAGE 1 OF 1

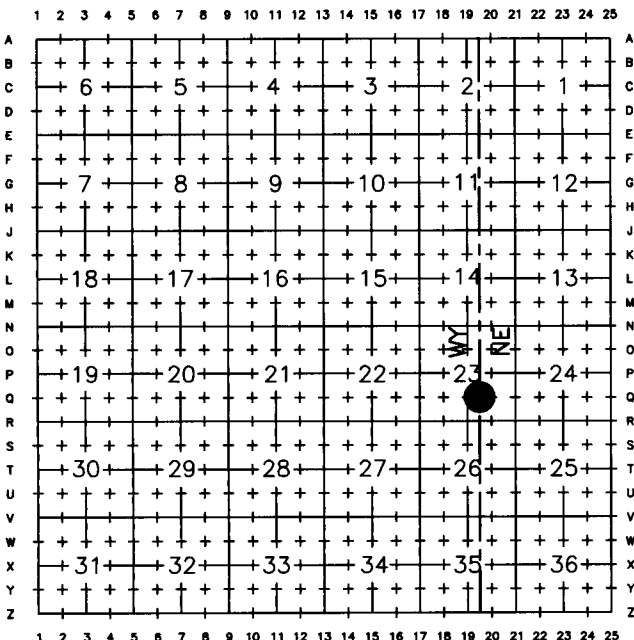


Monument location

Monument Inscription

Date of Field Work: September 2011 Office Reference: 3291

Cross Index Plat

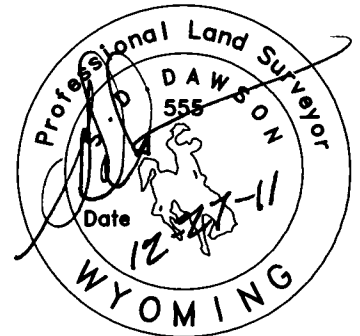


Firm/Agency, Address

AVI p.c.
1103 Old Town Lane, Suite 101
Cheyenne, WY 82009
Telephone Number: 307-637-6017

This corner record was prepared by me or under my direction and supervision.

SEAL & SIGNATURE



Cross-Index No.: Q/R - 19/20

Corner Name Mile Post 11 WY Section 23, T 14 N, R 60 W, 6th P.M. along the WY/NE State Line

County: Laramie, Wyoming

SBRPEPLS/PLSW: March 1994; PLSW January 1998